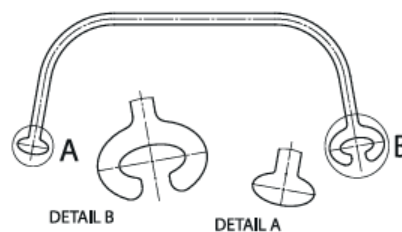


Hinnad ei ole siduvad. Lõpplik hind fikseeritakse hinnapakumisega  
Kõik tooted valmistatakse pikkustega vastavalt tellimusele

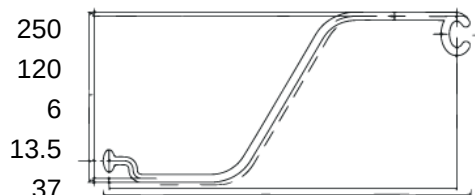
### EPZ 17

Laius	mm	170
Kõrgus	mm	70
Paksus	mm	6
Kaal 1m <sup>2</sup>	kg	16
Hind m <sup>2</sup>	EUR	45
Hinnale lisandub KM ja transport tehastest		



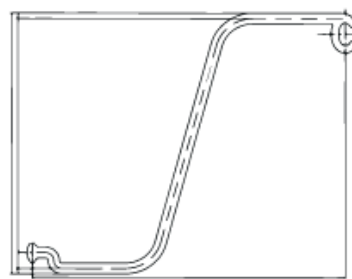
### EPZ 25/12/6

Laius	mm	250
Kõrgus	mm	120
Paksus	mm	6
Kaal 1m <sup>2</sup>	kg	13.5
Hind m <sup>2</sup>	EUR	37
Hinnale lisandub KM ja transport tehastest		



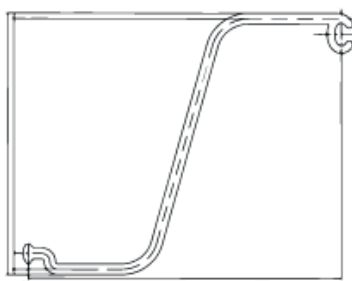
### EPZ 25/21/7

Laius	mm	250
Kõrgus	mm	210
Paksus	mm	7
Kaal 1m <sup>2</sup>	kg	19
Hind m <sup>2</sup>	EUR	51
Hinnale lisandub KM ja transport tehastest		



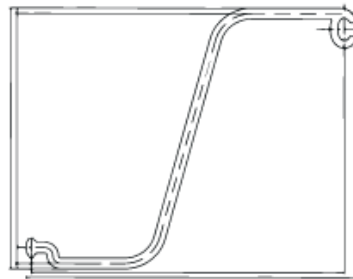
### EPZ 25/21/9

Laius	mm	250
Kõrgus	mm	210
Paksus	mm	9
Kaal 1m <sup>2</sup>	kg	23.1
Hind m <sup>2</sup>	EUR	63
Hinnale lisandub KM ja transport tehastest		



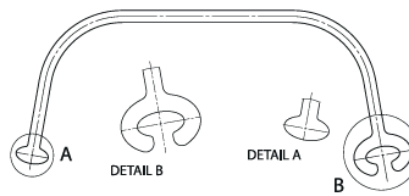
### EPZ 25/21/11

Laius	mm	250
Kõrgus	mm	210
Paksus	mm	11
Kaal 1m <sup>2</sup>	kg	28.6
Hind m <sup>2</sup>	EUR	78
Hinnale lisandub KM ja transport tehastest		



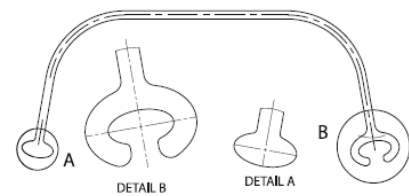
### EPZ 29

Laius	mm	290
Kõrgus	mm	120
Paksus	mm	10
Kaal 1m <sup>2</sup>	kg	27.6
Hind m <sup>2</sup>	EUR	75
Hinnale lisandub KM ja transport tehastest		



### EPZ 29/7

Laius	mm	290
Kõrgus	mm	118.5
Paksus	mm	7
Kaal 1m <sup>2</sup>	kg	20.9
Hind m <sup>2</sup>	EUR	57
Hinnale lisandub KM ja transport tehastest		



90 graadi nurgaelementi küsi eraldi  
Hinnakirjas on toodud halli värvi toodete hinnad  
On võimalik tellida erinevat värvi sulundseina